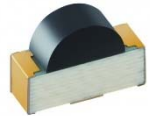


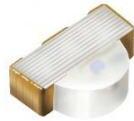
SMD Phototransistor Selector Guide



SMD Chip right angle lens



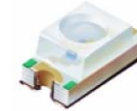
SMD Chip right angle lens



SMD Chip with Lens & Filter



SMD Chip



Features include:-

- Choice of packages
- Low Dark Current
- Fast response times
- High photosensitivity

Applications

- Instrumentation, IR communication, Optical switch

Part No	Package	Peak Wavelength (nm)	V(br) CEO (V)	Rise/Fall time (µs)	Vce Sat (V)	Ic ON min (mA)	Ic ON Typ (mA)	Dark current ID (nA)
EAPST1608A0	Chip LED 0603	940	30	15/15µS	0.4	0.3	0.6	100nA
LG150PT-CT	Chip LED 1206	940	30	5/5µS	0.4	0.5	1.3	100nA (Vce=10v)
EAPSV3026A0	Chip LED 1206 with lens	940	30	15/15µS	0.4	4	10	100nA
PT26-21B/TR8	Chip LED 1206	940	30	15/15µS	0.4	2.6 typ		50nA
PT12-21C/TR8	Chip LED 1204 R/A lens	940	30	15/15µS	0.4	0.3		100nA
PT12-21B/TR8	Chip LED 1204 R/A B lens	940	30	15/15µS	0.4	0.3		100nA

B13, Derwent Court, William Way, Moss Industrial Estate, Leigh, Lancashire WN7 3PT
 T +44 (0) 1942 671122 W www.plusopto.co.uk E sales@plusopto.co.uk